

PSYCHOLOGY ONE CONFERENCE

Thursday, June 27

SCHEDULE

| | | |
|-------------------|--|---|
| 8:00am – 8:45am | Breakfast |  |
| 8:45am – 9:10am | Welcome <i>Bridgette Hard, Duke University</i> | |
| 9:15am – 10:15am | Student Trust in the Teacher: Its Impact on Motivation, Perseverance, and Learning <i>Stephen Chew, Samford University</i> |  |
| 10:15am – 10:30am | BREAK | |
| 10:30am – 11:45am | Teaching Expo: 15-minute Teaching Ideas <i>Instructors share favorite demonstrations, assignments, teaching tips, and class practices.</i> Back to Square One: Using Crossword Puzzles to Teach Cognition Principles <i>Steve Jones, City of Medicine Academy</i> Minding the Gap: Harnessing Curiosity to Boost Student Engagement <i>Laura Freberg, Cal Poly San Luis Obispo</i> Using Mate Selection to Teach Scientific Method <i>Robert Correia, Trident Technical College</i> Craik, Lockhart, and Skinner Walk into a General Psychology Class: Creating Contingencies for Semantic Processing <i>Keith Jones, Central College, Iowa</i> The Use of a Distraction-Blocking Application in Large Psychology Classes: One Instructor's Experience <i>Carolyn Cavanaugh Toft, Arizona State University</i> |  |
| 11:45am – 1:15pm | Lunch and Discussions <i>Assigned seats. Enjoy lunch and discuss teaching topics with attendees in a roundtable format.</i> |  |





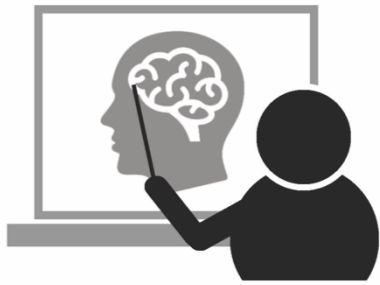
| | | |
|------------------------|---|---|
| <p>1:15pm – 2:30pm</p> | <p>Teaching Expo: 15-minute Teaching Ideas <i>Instructors share favorite demonstrations, assignments, teaching tips, and class practices.</i></p> <p>The Edible Neuron: Tangible Learning for Memory Retention <i>Diana Mililo, Nassau Community College</i></p> <p>Measuring the Impact of Skill-based Learning for Psychology Learners using the Employable Self-Efficacy Survey <i>Kathleen Hughes Stellmach, Pasco-Hernando State College</i></p> <p>Psychological Observers: A Role Play Exercise to Teach Research Methods <i>Philip Smith, University of Prince Edward Island</i></p> <p>"Is that BS?" Empowering Intro Students to Self-generate and Communicate Substantive Evaluations of Common Lay Ideas about Psychology <i>Jessica Salvatore, Sweet Briar College</i></p> <p>Escape the (Class)room! <i>Christina Ragan, Purdue University Northwest</i></p> |  |
| <p>2:30pm – 2:45pm</p> | <p>BREAK</p> | |
| <p>2:45pm – 3:45pm</p> | <p>Focused Roundtable Discussions <i>Guests will select from a range of teaching topics and exchange ideas in a roundtable format, led by a group facilitator. After 30 minutes, attendees will have an opportunity to switch to a different discussion topic.</i></p> |  |
| <p>3:45pm – 4:00pm</p> | <p>BREAK</p> | |
| <p>4:00pm – 5:00pm</p> | <p>The Science of Misinformation: A Cognitive Psych Perspective on Fake News and False Beliefs <i>Elizabeth Marsh, Duke University</i></p> |  |
| <p>5:00pm – 5:15pm</p> | <p>Group Photo</p> | |
| <p>5:15pm – 6:45pm</p> | <p>Wine and Cheese Reception <i>Enjoy wine, cheese, heavy hors d'oeuvres, and conversation.</i></p> |  |

Image attributions (all from the Noun Project): Meal by Eddy Wong; Podium by Creative Stall; Idea by Vectors Point; Discussion by Samy Menai; Wine and cheese by Kiran



PSYCHOLOGY ONE CONFERENCE

Friday, June 28
SCHEDULE

| | | |
|-------------------|---|---|
| 8:00am – 8:45am | Breakfast |  |
| 8:45am – 9:45am | Supporting the Diverse Needs of Students by Developing Success Skills in Introductory Psychology <i>Sarah Grison, Parkland College, Illinois</i> |  |
| 9:45am – 10:45am | Focused Roundtable Discussions <i>Guests will select from a range of teaching topics and exchange ideas in a roundtable format, led by a group facilitator. After 30 minutes, attendees will have an opportunity to switch to a different discussion topic.</i> |  |
| 10:45am – 11:00am | BREAK | |
| 11:00am – 12:15pm | Teaching Expo: 15-minute Teaching Ideas <i>Instructors share favorite demonstrations, assignments, teaching tips, and class practices.</i> A Celebration of Erikson's Theory Through the Examination of Birthday Cards <i>Natalie Homa, Thiel College</i> Creating a More Diverse and Inclusive Introduction to Psychology Course <i>Melinda Ciccocioppo, University of Pittsburgh</i> Improving Student Metacognition in an Introductory Psychology Course Through Reflection on Exam Preparation Practices <i>Gary Muir, St. Olaf College</i> Cognitive Distortions: Teaching Clinical Psychology Without Case Studies <i>Brenda Yang and Paula Yust, Duke University</i> |  |
| 12:15pm – 1:30pm | Closing Thoughts and Lunch <i>Bridgette Hard, Duke University</i> |  |